

MiWind Product Catalog PDF

Commercial airflow equipment families



EQUIPMENT FAMILIES

5

PRODUCT SERIES

29

MODEL ENTRIES

29

USE

Product catalog

CATALOG SCOPE

Equipment families and available local model data.

- This catalog lists every public MiWind equipment series currently published on the site.
- Technical values are copied from the local product dataset. Where a value is not verified, the catalog marks it as confirm by model instead of inventing a number.
- Certification, warranty, lead time, fan curves, electrical options, and project submittal documents must be confirmed against the selected model and sales channel.

PRODUCT INDEX

Five equipment families.

Air Curtains

17 series / 17 model entries

Door air curtains for commercial openings.

Ventilation Fan

6 series / 6 model entries

Inline and cabinet fans for ducted airflow.

Dehumidifiers

2 series / 2 model entries

Commercial moisture-control equipment.

Fresh Air and ERV

2 series / 2 model entries

Fresh air and recovery ventilation units.

Exhaust Fans

2 series / 2 model entries

Ceiling and wall exhaust fans.

Air Curtains

Air curtains for retail doors, service entrances, cold-room openings, and light industrial access points.

SERIES AND MODEL PARAMETERS

Use these rows to select the right product page before requesting model documents.



Q Cross-Flow Air Curtain Series

Q Cross-Flow Air Curtain

Cross-flow door air curtain for shops, restaurants, and common commercial entrances that need a compact unit, metal housing, and uniform discharge across the opening.

Model: Q Series

Airflow: Air velocity 11 / 9 m/s high / low; confirm exact airflow by model

Voltage: Confirm the US voltage option

Power: 95-298 W by model length; confirm voltage and exact model power

Dimensions: 600/900/1000/1200/1500/1800/2000 mm available lengths; confirm inch dimensions

Weight: Confirm shipping and installed weight

Mounting: Surface-mounted door unit; installation height 2.0-2.5 m

Controls: Confirm switch, sensor, and wiring options



S Heavy-Duty Air Curtain Series

S Heavy-Duty Air Curtain

S series air curtain for commercial openings that need a slim metal body, low-noise operation, remote-control option, and published model sizes from 900 mm to 2000 mm.

Model: S Series

Airflow: 1400-4000 m³/h high speed; 1100-3200 m³/h low speed

Voltage: 220-240 V, 50/60 Hz model table; confirm US electrical option

Power: 92-210 W by model and speed

Sound: 40-54 dB by model and speed

Dimensions: 900/1000/1200/1500/1800/2000 x 158 x 184 mm model sizes

Weight: 7.5-14.7 kg net weight; 8.5-15.8 kg gross weight

Mounting: Surface-mounted unit; mounting height 2.5-3.0 m

Controls: Switch and remote variants listed as FM-12xxS and FM-12xxS/Y



B Rust-Resistant Air Curtain Series

B Rust-Resistant Air Curtain

Restaurant and commercial entry air curtain with rust-resistant casing, optimized duct path, and motor details to verify before project use.

Model: B Series

Airflow: Air velocity 11 / 9 m/s high / low; confirm exact airflow by model

Voltage: Confirm the US voltage option

Power: 171-402 W by model length; confirm voltage and exact model power

Dimensions: 900/1000/1200/1500/1800/2000 mm available lengths; confirm inch dimensions

Weight: Confirm shipping and installed weight

Mounting: Surface-mounted unit; installation height 2.5-3.0 m

Controls: Confirm switch, remote, and any special-duty control package



D Commercial Air Curtain Series

D Commercial Air Curtain

Commercial door air curtain for high-frequency mall, warehouse, and distributor entrance projects where width, traffic, and motor documents need early review.

Model: D Series

Airflow: Air velocity 13 / 11 m/s high / low for 1200-class models; up to 17 / 14 or 21 / 18 m/s on centrifugal variants

Voltage: Confirm the US voltage option

Power: 140-1036 W by model or sub-series; confirm voltage and exact model power

Dimensions: 900/1000/1200/1500/1800/2000 mm available lengths; confirm inch dimensions

Weight: Confirm shipping and installed weight

Mounting: Surface-mounted unit; installation height 3.0-5.0 m by model



Q6 Powerful Air Curtain Series

Q6 Powerful Air Curtain

Powerful Q-series air curtain for restaurant and retail entrances where stronger discharge, indoor comfort, and frequent doorway traffic need review together.

Model: Q6 Series

Airflow: air volume 1800-4000 m3/h high speed; 1400-3200 m3/h low speed by model
 Voltage: Confirm the US voltage option
 Power: 140-245 W high speed; 112-196 W low speed by model length; confirm voltage and exact model power
 Sound: 50-54 dB high speed; 40-43 dB low speed by model length; installed sound depends on mounting conditions
 Dimensions: 900/1000/1200/1500/1800/2000 x 190 x 210 mm model sizes; confirm inch dimensions
 Weight: Confirm shipping and installed weight
 Mounting: Surface-mounted entrance air curtain; mounting height 2.5-3.0 m
 Controls: Confirm switch, sensor, and wiring package



X5 Centrifugal Air Curtain Series

X5 Centrifugal Air Curtain

Centrifugal air curtain for taller commercial openings where discharge penetration, mounting height, sound, and motor data need tighter review.

Model: X5 Series

Airflow: Air velocity 17 / 14 m/s high / low or 21 / 18 m/s by model; confirm exact intake and model class
 Voltage: Confirm the US voltage option
 Power: 345-1036 W by model length; confirm voltage and exact model power
 Dimensions: 900/1000/1200/1500/1800/2000 mm available lengths; confirm inch dimensions
 Weight: Confirm shipping and installed weight
 Mounting: Surface-mounted unit; installation height 3.5-4.0 m or 4.0-5.0 m by model



X7 Cross-Flow Air Curtain Series

X7 Cross-Flow Air Curtain

Cross-flow air curtain for small-to-medium storefronts where a practical wholesale-ready model is more important than a specialized mounting path.

Model: X7 Series

Airflow: air volume 1200-2700 m³/h by model; confirm exact airflow before submittal use

Voltage: Confirm the US voltage option

Power: 300-730 W by model length and class; confirm voltage and exact model power

Sound: 49-60 dB by model length and class; installed sound depends on mounting conditions

Dimensions: 900/1000/1200/1500/1800/2000 x 225 x 245 mm model sizes; confirm inch dimensions

Weight: Confirm shipping and installed weight

Mounting: Surface-mounted unit; verify header clearance and cabinet projection



A5 Restaurant Air Curtain Series

A5 Restaurant Air Curtain

A5 cross-flow air curtain for restaurant doors where comfort, odor separation, and straightforward installation are the main selection points.

Model: A5 Series

Airflow: Air velocity 11 / 9 m/s high / low; confirm exact airflow by model

Voltage: Confirm the US voltage option

Power: 140-245 W by model length; confirm voltage and exact model power

Dimensions: 900/1200/1500/1800/2000 mm available lengths; confirm inch dimensions

Weight: Confirm shipping and installed weight

Mounting: Surface-mounted restaurant entrance unit; installation height 2.5-3.0 m



Ceiling Mounted Air Curtain Series

Ceiling Mounted Air Curtain

Ceiling mounted air curtain for constrained headers, recessed ceiling plans, and projects where the air curtain should stay visually integrated with the ceiling while door width, mounting height, and service access are checked.

Model: Ceiling Series

Airflow: air volume 1260-3300 m3/h high speed; 1000-2600 m3/h low speed by model
 Voltage: Confirm the US voltage option
 Power: 260-670 W high speed; 234-603 W low speed by model; confirm voltage and exact model power
 Sound: 50-60 dB high speed; 45-54 dB low speed by model; installed sound depends on ceiling conditions
 Dimensions: 900/1000/1200/1500/1800/2000 x 225 x 290 mm model sizes; confirm inch dimensions
 Weight: Confirm shipping and installed weight
 Mounting: Ceiling mounted / recessed; mounting height 3.5-4.0 m or 4.0-5.0 m by model class



A3 Heating Air Curtain Series

A3 Heating Air Curtain

Heated entrance air curtain for comfort-driven doors where the air barrier, warm-air function, voltage, and controls must be reviewed together.

Model: A3 Heating Series

Airflow: Air velocity 7 / 5 m/s high / low; confirm exact airflow by model
 Voltage: Confirm the US voltage option
 Power: 150-250 W motor power; 6000-20000 W PTC heating power by model length; confirm electrical service
 Dimensions: 900/1200/1500/1800 mm available lengths; confirm inch dimensions
 Weight: Confirm shipping and installed weight
 Mounting: Surface-mounted heated unit; installation height 2.5-3.5 m
 Heating: PTC heating power 6000-20000 W by model length; confirm voltage and heating model

Industrial Air Curtain Series



Industrial Air Curtain

Industrial air curtain for factory gates and large service openings where dust, humidity, temperature swing, mounting structure, and service clearance shape the selection.

Model: Industrial Series

Airflow: Air velocity 28 m/s; confirm exact industrial model before submittal use
 Voltage: text lists 380 V three-phase motor; confirm US electrical option
 Power: 1350-3300 W by model length; confirm voltage and exact model power
 Dimensions: 900/1200/1500/1800/2000 mm available lengths; confirm inch dimensions
 Weight: Confirm shipping and installed weight
 Mounting: Industrial mounting; installation height 6.0-8.0 m

F Centrifugal Air Curtain Series



F Centrifugal Air Curtain

F series centrifugal air curtain for commercial entrances with width options from 900 mm to 2000 mm and 3.5-4.0 m or 4.0-5.0 m mounting-height ranges by model.

Model: F Series

Airflow: Air velocity 17 / 14 m/s high / low or 20 / 18 m/s by model; confirm exact model before submittal use
 Voltage: Confirm the US voltage option
 Power: 345-1036 W by model length; confirm voltage and exact model power
 Dimensions: 900/1200/1500/1800/2000 mm available lengths; confirm inch dimensions
 Weight: Confirm shipping and installed weight
 Mounting: Surface-mounted centrifugal unit; installation height 3.5-4.0 m or 4.0-5.0 m by model

Pro D Commercial Air Curtain Series



Pro D Commercial Air Curtain

Pro D commercial air curtain for projects that need a D-series body with a stronger control and comfort selection path.

Model: Pro D Series

Airflow: Air velocity 13 / 11 m/s high / low; confirm exact airflow by model
 Voltage: Confirm the US voltage option
 Power: 140-260 W by model length; confirm voltage and exact model power
 Dimensions: 900/1000/1200/1500/1800/2000 mm available lengths; confirm inch dimensions
 Weight: Confirm shipping and installed weight
 Mounting: Surface-mounted commercial unit; installation height 3.0-3.5 m
 Controls: Confirm control package and wiring before project use

C Series Air Curtain



C Series Air Curtain

C series air curtain for general commercial doorway selection where versatility, value, and international supply details matter before model data.

Model: C Series

Airflow: Air velocity 13 / 11 m/s high / low; confirm exact airflow by model

Voltage: Confirm the US voltage option

Power: 228-568 W by model length; confirm voltage and exact model power

Dimensions: 900/1000/1200/1500/1800/2000 mm available lengths; confirm inch dimensions

Weight: Confirm shipping and installed weight

Mounting: Surface-mounted unit; installation height 3.0-3.5 m

E Air Curtain Series



E Air Curtain

E series centrifugal air curtain for commercial entrances with width options from 900 mm to 2000 mm and 3.5-4.0 m or 4.0-5.0 m mounting-height ranges by model.

Model: E Series

Airflow: Air velocity 17 / 14 m/s high / low or 21 / 18 m/s by model; confirm exact model before submittal use

Voltage: Confirm the US voltage option

Power: 345-1036 W by model length; confirm voltage and exact model power

Dimensions: 900/1200/1500/1800/2000 mm available lengths; confirm inch dimensions

Weight: Confirm shipping and installed weight

Mounting: Surface-mounted centrifugal unit; installation height 3.5-4.0 m or 4.0-5.0 m by model

Cold Storage Air Curtain Series



Cold Storage Air Curtain

Cold-room air curtain for temperature separation, traffic, frost, humidity, and stored-product protection review at cold-storage openings.

Model: Cold Storage Series

Airflow: Air velocity 19.5 m/s; confirm exact cold-storage model before submittal use

Voltage: Confirm the US voltage option

Power: 850-1100 W by model length; confirm voltage and exact model power

Dimensions: 1330/1430/1630/1930/2230/2430/2630/2830 mm available lengths; confirm inch dimensions

Weight: Confirm shipping and installed weight

Mounting: Door-mounted air curtain; installation height 2.5-3.0 m

Max D Industrial Air Curtain Series

Max D Industrial Air Curtain

Max D industrial air curtain for very large factory openings where airflow capacity, door width, environmental exposure, and structural mounting need current model documents.

Model: Max D Series

Airflow: Air velocity 17 / 14 m/s high / low or 21 / 18 m/s by model; confirm exact model before submittal use

Voltage: Confirm the US voltage option

Power: 345-1036 W by model length; confirm voltage and exact model power

Dimensions: 900/1000/1200/1500/1800/2000 mm available lengths; confirm inch dimensions

Weight: Confirm shipping and installed weight

Mounting: Industrial structural mounting; installation height 3.5-4.0 m or 4.0-5.0 m by model



Q Cross-Flow Air Curtain Source Parameters

Air Curtains / Q Cross-Flow Air Curtain Series



PERFORMANCE

Model	Remote	Voltage	Power	Air Volume	Air Velocity	Noise
Air velocity	11 / 9 m/s high / low	Use as a source velocity				
Installation height	2.0-2.5 m	Check finished opening				
Motor power	95-298 W by model length	Confirm voltage and exact				
Available lengths	600 / 900 / 1000 / 1200 /	Match the unit length to				

SIZE AND INSTALLATION

Model	N.W.	G.W.	Unit Size	Carton Size	Mounting
Air velocity					
Installation height					
Motor power					
Available lengths					

S Air Curtain Model Table

Air Curtains / S Heavy-Duty Air Curtain Series



PERFORMANCE

Model	Remote	Voltage	Power	Air Volume	Air Velocity	Noise
FM-1209S	FM-1209S/Y	220-240 V	115 / 92 W	1400 / 1100 m ³ /h	11 / 9 m/s	50 / 40 dB
FM-1210S	FM-1210S/Y	220-240 V	116 / 93 W	1700 / 1400 m ³ /h	11 / 9 m/s	51 / 41 dB
FM-1212S	FM-1212S/Y	220-240 V	120 / 96 W	2000 / 1800 m ³ /h	11 / 9 m/s	51 / 41 dB
FM-1215S	FM-1215S/Y	220-240 V	150 / 120 W	2800 / 2200 m ³ /h	11 / 9 m/s	52 / 42 dB
FM-1218S	FM-1218S/Y	220-240 V	210 / 168 W	3600 / 2900 m ³ /h	11 / 9 m/s	53 / 43 dB
FM-1220S	FM-1220S/Y	220-240 V	210 / 168 W	4000 / 3200 m ³ /h	11 / 9 m/s	54 / 44 dB

SIZE AND INSTALLATION

Model	N.W.	G.W.	Unit Size	Carton Size	Mounting
FM-1209S	7.5 kg	8.5 kg	900 x 158 x 184 mm	950 x 210 x 240 mm	2.5-3.0 m
FM-1210S	8.0 kg	9.0 kg	1000 x 158 x 184 mm	1050 x 210 x 240 mm	2.5-3.0 m
FM-1212S	9.5 kg	10.5 kg	1200 x 158 x 184 mm	1250 x 210 x 240 mm	2.5-3.0 m
FM-1215S	11.7 kg	12.8 kg	1500 x 158 x 184 mm	1550 x 210 x 240 mm	2.5-3.0 m
FM-1218S	13.6 kg	14.6 kg	1800 x 158 x 184 mm	1850 x 210 x 240 mm	2.5-3.0 m
FM-1220S	14.7 kg	15.8 kg	2000 x 158 x 184 mm	2050 x 210 x 240 mm	2.5-3.0 m

B Air Curtain Source Parameters

Air Curtains / B Rust-Resistant Air Curtain Series



PERFORMANCE

Model	Remote	Voltage	Power	Air Volume	Air Velocity	Noise
Air velocity	11 / 9 m/s high / low	Use as a source velocity				
Installation height	2.5-3.0 m	Check against finished				
Motor power	171-402 W by model length	Confirm voltage and exact				
Available lengths	900 / 1000 / 1200 / 1500 /	Match the unit length to				

SIZE AND INSTALLATION

Model	N.W.	G.W.	Unit Size	Carton Size	Mounting
Air velocity					
Installation height					
Motor power					
Available lengths					

D Air Curtain Source Parameters

Air Curtains / D Commercial Air Curtain Series



PERFORMANCE

Model	Remote	Voltage	Power	Air Volume	Air Velocity	Noise
Air velocity	13 / 11 m/s high / low for	Use as a source velocity				
Installation height	3.0-5.0 m by model	Check whether the				
Motor power	140-1036 W by model or	Confirm voltage and exact				
Available lengths	900 / 1000 / 1200 / 1500 /	Match the unit length to				

SIZE AND INSTALLATION

Model	N.W.	G.W.	Unit Size	Carton Size	Mounting
Air velocity					
Installation height					
Motor power					
Available lengths					

Q6 Powerful Air Curtain Source Parameters

Air Curtains / Q6 Powerful Air Curtain Series



PERFORMANCE

Model	Remote	Voltage	Power	Air Volume	Air Velocity	Noise
Air volume	1800-4000 m ³ /h high speed;	Use as a source airflow				
Air velocity	11 / 9 m/s high / low	Use as a source velocity				
Motor power	140-245 W high speed;	Confirm voltage and exact				
Noise level	50-54 dB high speed;	Use as a source sound				
Available lengths	900 / 1000 / 1200 / 1500 /	Match the unit length to				
Mounting height	2.5-3.0 m	Check against finished				

SIZE AND INSTALLATION

Model	N.W.	G.W.	Unit Size	Carton Size	Mounting
Air volume					
Air velocity					
Motor power					
Noise level					
Available lengths					
Mounting height					

X5 Centrifugal Air Curtain Source Parameters

Air Curtains / X5 Centrifugal Air Curtain Series



PERFORMANCE

Model	Remote	Voltage	Power	Air Volume	Air Velocity	Noise
Air velocity	17 / 14 m/s high / low or 21	Use as a source velocity				
Installation height	3.5-4.0 m or 4.0-5.0 m by model	Check against finished				
Motor power	345-1036 W by model length	Confirm voltage and exact				
Available lengths	900 / 1000 / 1200 / 1500 /	Match the unit length to				

SIZE AND INSTALLATION

Model	N.W.	G.W.	Unit Size	Carton Size	Mounting
Air velocity					
Installation height					
Motor power					
Available lengths					

X7 Cross-Flow Air Curtain Source Parameters

Air Curtains / X7 Cross-Flow Air Curtain Series



PERFORMANCE

Model	Remote	Voltage	Power	Air Volume	Air Velocity	Noise
Air volume	1200-2700 m ³ /h by model	Use as a source airflow				
Wind speed	17 m/s or 21 m/s by model	Use as a source velocity				
Motor power	300-730 W by model length and	Confirm voltage and exact				
Noise level	49-60 dB by model length and	Use as a source sound				
Available lengths	900 / 1000 / 1200 / 1500 /	Match the unit length to				
Unit size	225 x 245 mm section with	Check cabinet depth,				

SIZE AND INSTALLATION

Model	N.W.	G.W.	Unit Size	Carton Size	Mounting
Air volume					
Wind speed					
Motor power					
Noise level					
Available lengths					
Unit size					

A5 Restaurant Air Curtain Source Parameters

Air Curtains / A5 Restaurant Air Curtain Series



PERFORMANCE

Model	Remote	Voltage	Power	Air Volume	Air Velocity	Noise
Air velocity	11 / 9 m/s high / low	Use as a source velocity				
Installation height	2.5-3.0 m	Check against finished				
Motor power	140-245 W by model length	Confirm voltage and exact				
Available lengths	900 / 1200 / 1500 / 1800 /	Match to finished door				

SIZE AND INSTALLATION

Model	N.W.	G.W.	Unit Size	Carton Size	Mounting
Air velocity					
Installation height					
Motor power					
Available lengths					

Ceiling Mounted Air Curtain Source Parameters

Air Curtains / Ceiling Mounted Air Curtain Series



PERFORMANCE

Model	Remote	Voltage	Power	Air Volume	Air Velocity	Noise
Air volume	1260-3300 m ³ /h high speed;	Use as a source airflow				
Air velocity	17 / 14 m/s or 21 / 18 m/s	Use as a source velocity				
Motor power	260-670 W high speed;	Confirm voltage and exact				
Noise level	50-60 dB high speed;	Use as a source sound				
Unit size	900-2000 x 225 x 290 mm by	Match length to finished				
Mounting height	3.5-4.0 m or 4.0-5.0 m by model	Check ceiling opening,				

SIZE AND INSTALLATION

Model	N.W.	G.W.	Unit Size	Carton Size	Mounting
Air volume					
Air velocity					
Motor power					
Noise level					
Unit size					
Mounting height					

A3 Heating Air Curtain Source Parameters

Air Curtains / A3 Heating Air Curtain Series



PERFORMANCE

Model	Remote	Voltage	Power	Air Volume	Air Velocity	Noise
Air velocity	7 / 5 m/s high / low	Use as a source velocity				
Installation height	2.5-3.5 m	Check against finished				
Motor and heating	150-250 W motor power;	Confirm electrical service,				
Available lengths	900 / 1200 / 1500 / 1800 mm	Match the unit length to				

SIZE AND INSTALLATION

Model	N.W.	G.W.	Unit Size	Carton Size	Mounting
Air velocity					
Installation height					
Motor and heating power					
Available lengths					

Industrial Air Curtain Source Parameters

Air Curtains / Industrial Air Curtain Series



PERFORMANCE

Model	Remote	Voltage	Power	Air Volume	Air Velocity	Noise
Air velocity	28 m/s	Use as a source velocity				
Installation height	6.0-8.0 m	Check structure, finished				
Motor power	1350-3300 W by model length	Confirm three-phase electrical				
Available lengths	900 / 1200 / 1500 / 1800 /	Match the unit length to				

SIZE AND INSTALLATION

Model	N.W.	G.W.	Unit Size	Carton Size	Mounting
Air velocity					
Installation height					
Motor power					
Available lengths					

F Centrifugal Air Curtain Source Parameters

Air Curtains / F Centrifugal Air Curtain Series



PERFORMANCE

Model	Remote	Voltage	Power	Air Volume	Air Velocity	Noise
Air velocity	17 / 14 m/s high / low or 20	Use as a source velocity				
Installation height	3.5-4.0 m or 4.0-5.0 m by model	Check whether the				
Motor power	345-1036 W by model length	Confirm voltage and exact				
Available lengths	900 / 1200 / 1500 / 1800 /	Match the unit length to				

SIZE AND INSTALLATION

Model	N.W.	G.W.	Unit Size	Carton Size	Mounting
Air velocity					
Installation height					
Motor power					
Available lengths					

Pro D Air Curtain Source Parameters

Air Curtains / Pro D Commercial Air Curtain Series



PERFORMANCE

Model	Remote	Voltage	Power	Air Volume	Air Velocity	Noise
Air velocity	13 / 11 m/s high / low	Use as a source velocity				
Installation height	3.0-3.5 m	Check against finished				
Motor power	140-260 W by model length	Confirm voltage and exact				
Available lengths	900 / 1000 / 1200 / 1500 /	Match the unit length to				

SIZE AND INSTALLATION

Model	N.W.	G.W.	Unit Size	Carton Size	Mounting
Air velocity					
Installation height					
Motor power					
Available lengths					

C Series Air Curtain Source Parameters

Air Curtains / C Series Air Curtain



PERFORMANCE

Model	Remote	Voltage	Power	Air Volume	Air Velocity	Noise
Air velocity	13 / 11 m/s high / low	Use as a source velocity				
Installation height	3.0-3.5 m	Check against finished				
Motor power	228-568 W by model length	Confirm voltage and exact				
Available lengths	900 / 1000 / 1200 / 1500 /	Match the unit length to				

SIZE AND INSTALLATION

Model	N.W.	G.W.	Unit Size	Carton Size	Mounting
Air velocity					
Installation height					
Motor power					
Available lengths					

E Centrifugal Air Curtain Source Parameters

Air Curtains / E Air Curtain Series



PERFORMANCE

Model	Remote	Voltage	Power	Air Volume	Air Velocity	Noise
Air velocity	17 / 14 m/s high / low or 21	Use as a source velocity				
Installation height	3.5-4.0 m or 4.0-5.0 m by model	Check whether the				
Motor power	345-1036 W by model length	Confirm voltage and exact				
Available lengths	900 / 1200 / 1500 / 1800 /	Match the unit length to				

SIZE AND INSTALLATION

Model	N.W.	G.W.	Unit Size	Carton Size	Mounting
Air velocity					
Installation height					
Motor power					
Available lengths					

Cold Storage Air Curtain Source Parameters

Air Curtains / Cold Storage Air Curtain Series



PERFORMANCE

Model	Remote	Voltage	Power	Air Volume	Air Velocity	Noise
Air velocity	19.5 m/s	Use as a source velocity				
Installation height	2.5-3.0 m	Check finished opening				
Motor power	850-1100 W by model length	Confirm voltage and exact				
Available lengths	1330 / 1430 / 1630 /	Match the unit length to				

SIZE AND INSTALLATION

Model	N.W.	G.W.	Unit Size	Carton Size	Mounting
Air velocity					
Installation height					
Motor power					
Available lengths					

Max D Air Curtain Source Parameters

Air Curtains / Max D Industrial Air Curtain Series



PERFORMANCE

Model	Remote	Voltage	Power	Air Volume	Air Velocity	Noise
Air velocity	17 / 14 m/s high / low or 21	Use as a source velocity				
Installation height	3.5-4.0 m or 4.0-5.0 m by model	Check against finished				
Motor power	345-1036 W by model length	Confirm voltage and exact				
Available lengths	900 / 1000 / 1200 / 1500 /	Match the unit length to				

SIZE AND INSTALLATION

Model	N.W.	G.W.	Unit Size	Carton Size	Mounting
Air velocity					
Installation height					
Motor power					
Available lengths					

Fresh Air and ERV

fresh air ventilation systems and fresh air exchanger options for offices, gyms, cafes, classrooms, and multi-room projects where outdoor-air CFM, ERV fresh air intake, HRV or ERV recovery direction, filters, duct route, controls, service access, and current model documents need to stay together.

SERIES AND MODEL PARAMETERS

Use these rows to select the right product page before requesting model documents.



Heat Recovery Ventilation Series

Heat Recovery Ventilation Unit

Ducted heat recovery ventilation unit and fresh air exchanger for projects comparing outdoor-air volume, ERV fresh air intake, HRV sizing notes, heat recovery vent intake, exchange core, filter pack, controls, voltage, and service access.

Model: HRV Series

Airflow: air volume range 150-15000 m³/h by model; confirm selected model and convert units before submittal use

Static: Confirm duct and filter pressure

Voltage: Confirm the US voltage option

Sound: noise range 32-69 dB(A) by model; installed sound depends on duct and mounting conditions

Dimensions: 4/6/8 inch duct-size range; confirm exact dimensions

Weight: Confirm shipping and installed weight

Mounting: Ducted HRV / fresh-air unit; verify orientation and service side

Filter: Pre-filter, carbon filter, or HEPA filter pack; confirm selected pack



Air Filter Box Series

Air Filter Box

Ducted air filter box for fresh-air paths and inline air duct filter requests where duct size, filter pack, service access, and pressure impact need to be reviewed together.

Model: Filter Box Series

Airflow: air volume range 120-2600 m³/h by model; confirm exact model before submittal use

Static: pressure loss rate 15-20%; verify selected filter pack and model

Voltage: Confirm the US voltage option

Dimensions: 4/6/8/10 inch duct-size range; confirm exact dimensions

Weight: Confirm shipping and installed weight

Mounting: Duct-mounted filter box; confirm access direction and exact dimensions

Filter: Pre-filter, carbon filter, or HEPA filter pack

Heat Recovery Ventilation Source Parameters

Fresh Air and ERV / Heat Recovery Ventilation Series



PERFORMANCE

Model	Remote	Voltage	Power	Air Volume	Air Velocity	Noise
Air volume range	150-15000 m ³ /h by model					
Heat exchange efficiency	Cold 60-72%; heat					
Enthalpy exchange efficiency	Cold 60-68%; heat					
Noise level	32-69 dB(A) by model					

SIZE AND INSTALLATION

Model	N.W.	G.W.	Unit Size	Carton Size	Mounting
Air volume range					
Heat exchange efficiency					
Enthalpy exchange efficiency					
Noise level					

Air Filter Box Source Parameters

Fresh Air and ERV / Air Filter Box Series



PERFORMANCE

Model	Remote	Voltage	Power	Air Volume	Air Velocity	Noise
Compatible duct diameters	100 / 150 / 200 / 250 mm	Match duct diameter				
Air volume range	120-2600 m ³ /h by model	Use as a source airflow				
Filtration stages	Primary G4 + activated	Confirm selected filter				
Pressure loss rate	15-20%	Use as a source pressure-loss				

SIZE AND INSTALLATION

Model	N.W.	G.W.	Unit Size	Carton Size	Mounting
Compatible duct diameters					
Air volume range					
Filtration stages					
Pressure loss rate					

Ventilation Fan

Inline, EC inline, circular, booster, HEPA, inline cabinet fan, centrifugal vent fan, and cabinet centrifugal fans for commercial inline duct fan selection, office space ventilation fans, centrifugal ventilation fan handoff, and ducted ventilation paths.

SERIES AND MODEL PARAMETERS

Use these rows to select the right product page before requesting model documents.



Inline Duct Fan Series

Inline Duct Fan

Mixed-flow inline duct fan for supply or exhaust runs, silent mixed-flow inline duct fan review, and pipeline fan requests that need round duct compatibility, two-speed control review, and pressure-aware fan selection.

Model: Inline Duct Fan Series

Airflow: air volume range 120-1900 m3/h by model; confirm exact model before submittal use

Static: Fan curve needed for the selected pressure point

Voltage: Confirm the US voltage option

Power: 22-260 W by model; confirm voltage and exact model power

Sound: 20-65 dB(A) by model; installed sound depends on duct and mounting conditions

Dimensions: 4/6/8/10/12 inch options available; confirm exact dimensions

Weight: Confirm shipping and installed weight

Mounting: Inline duct mounted

Controls: Confirm 2-speed or other control package



EC Inline Duct Fan Series

EC Inline Duct Fan

EC inline duct fan for offices, classrooms, gyms, restaurant support rooms, and ducted fresh-air paths where PWM speed control, temperature or humidity response, pressure path, and serviceable mounting matter.

Model: EC Inline Duct Fan Series

Airflow: air volume range 240-540 m3/h by model; confirm exact model before submittal use

Voltage: Confirm the US voltage option

Power: 37-50 W by model; confirm voltage and exact model power

Sound: 32-36 dB(A) range; installed sound depends on duct and mounting conditions

Dimensions: 4/6/8 inch options available; confirm exact dimensions

Weight: Confirm shipping and installed weight

Mounting: Inline duct mounted

Controls: Confirm speed, temperature, and humidity control package

Circular Duct Fan Series

Circular Duct Fan



Circular duct fan for round-duct runs where metal housing, outer-rotor motor details, size, and fan curve need coordinated review.

Model: Circular Duct Fan Series

Airflow: air volume range 310-1900 m3/h by model; confirm exact model before submittal use

Voltage: Confirm the US voltage option

Power: 85-260 W by model; confirm voltage and exact model power

Sound: 50-65 dB(A) range; installed sound depends on duct and mounting conditions

Dimensions: 4/5/6/8/10/12 inch options available; confirm exact dimensions

Weight: Confirm shipping and installed weight

Mounting: Circular duct mounted

Booster Fan Series

Booster Fan



Booster fan for duct-assist projects, greenhouse or storage airflow support, inline duct booster paths, and mixed-flow booster review where the installer already knows target CFM, duct length, elbows, and why the run needs assistance.

Model: Booster Fan Series

Airflow: air volume range 240-540 m3/h by model; confirm exact model before submittal use

Static: static pressure range 142-295 Pa; confirm fan curve for installed duct path

Voltage: Confirm the US voltage option

Power: 37-50 W by model; confirm voltage and exact model power

Sound: 32-36 dB(A) range; installed sound depends on duct and mounting conditions

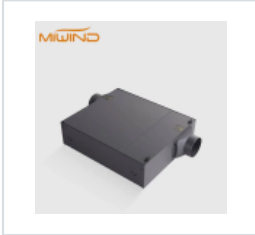
Dimensions: 4/6/8 inch options available; confirm exact dimensions

Weight: Confirm shipping and installed weight

Mounting: Inline duct assist mounting; verify installation position

HEPA Purified Duct Fan Series

HEPA Purified Duct Fan



Filtered duct fan for projects where airflow, carbon filtration, HEPA filtration, two-speed control, and filter service access must align.

Model: HEPA Purified Duct Fan Series

Airflow: air volume range 160-920 m3/h by model; confirm exact model before submittal use

Voltage: Confirm the US voltage option

Power: 30-160 W by model; confirm voltage and exact model power

Sound: 24-45 dB(A) by model; installed sound depends on duct, filters, and mounting conditions

Dimensions: 4/6/8 inch options available; confirm exact dimensions

Weight: Confirm shipping and installed weight

Mounting: Inline duct mounted with filtration; verify service access

Filter: Carbon and HEPA filter pack; confirm selected configuration

Controls: Confirm 2-speed or other control package

Cabinet Centrifugal Fan Series

Cabinet Centrifugal Fan



Cabinet centrifugal fan for utility rooms, industrial ventilation, centrifugal inline fan review, centrifugal extractor fan questions, centrifugal inline exhaust fan and dual-inlet cabinet centrifugal fan document review, and pressure-driven airflow where cabinet access, phase, airflow range, and fan curve data matter.

Model: Cabinet Centrifugal Fan Series

Airflow: range is 2000-25000 CMH; convert and confirm exact CFM

Static: static pressure range 400-740 Pa; confirm fan curve and pressure class

Voltage: 1-phase or 3-phase options available; confirm US electrical fit

Power: 780-7856 W by model; confirm voltage, phase, and exact model power

Dimensions: Confirm inch dimensions by model

Weight: Confirm shipping and installed weight

Mounting: Cabinet / utility fan; confirm service access and clearance

Inline Duct Fan Source Parameters

Ventilation Fan / Inline Duct Fan Series



PERFORMANCE

Model	Remote	Voltage	Power	Air Volume	Air Velocity	Noise
Duct diameters	100 / 125 / 150 / 200 / 250	Match duct diameter				
Air volume range	120-1900 m ³ /h by model	Use as a source airflow				
Motor power	22-260 W by model	Confirm voltage and exact				
Noise level	20-65 dB(A) by model	Use as a source sound				

SIZE AND INSTALLATION

Model	N.W.	G.W.	Unit Size	Carton Size	Mounting
Duct diameters					
Air volume range					
Motor power					
Noise level					

EC Inline Duct Fan Source Parameters

Ventilation Fan / EC Inline Duct Fan Series



PERFORMANCE

Model	Remote	Voltage	Power	Air Volume	Air Velocity	Noise
Duct diameters	100 / 150 / 200 mm	Match duct diameter				
Air volume range	240-540 m ³ /h by model	Use as a source airflow				
Motor power	37-50 W	Confirm voltage and exact				
Noise level	32-36 dB(A)	Use as a source sound				

SIZE AND INSTALLATION

Model	N.W.	G.W.	Unit Size	Carton Size	Mounting
Duct diameters					
Air volume range					
Motor power					
Noise level					

Circular Duct Fan Source Parameters

Ventilation Fan / Circular Duct Fan Series



PERFORMANCE

Model	Remote	Voltage	Power	Air Volume	Air Velocity	Noise
Duct diameters	100 / 125 / 150 / 160 / 200	Match duct diameter				
Air volume range	310-1900 m ³ /h by model	Use as a source airflow				
Motor power	85-260 W by model	Confirm voltage and exact				
Noise level	50-65 dB(A)	Use as a source sound				

SIZE AND INSTALLATION

Model	N.W.	G.W.	Unit Size	Carton Size	Mounting
Duct diameters					
Air volume range					
Motor power					
Noise level					

Booster Fan Source Parameters

Ventilation Fan / Booster Fan Series



PERFORMANCE

Model	Remote	Voltage	Power	Air Volume	Air Velocity	Noise
Air volume range	240-540 m ³ /h by model	Use as a source airflow				
Static pressure	142-295 Pa	Use as source pressure				
Motor power	37-50 W	Confirm voltage and exact				
Noise level	32-36 dB(A)	Use as a source sound				

SIZE AND INSTALLATION

Model	N.W.	G.W.	Unit Size	Carton Size	Mounting
Air volume range					
Static pressure					
Motor power					
Noise level					

HEPA Purified Duct Fan Source Parameters

Ventilation Fan / HEPA Purified Duct Fan Series



PERFORMANCE

Model	Remote	Voltage	Power	Air Volume	Air Velocity	Noise
Duct diameters	100 / 150 / 200 / 250 mm	Match duct diameter				
Air volume range	160-920 m ³ /h by model	Use as a source airflow				
Motor power	30-160 W by model	Confirm voltage and exact				
Noise level	24-45 dB(A) by model	Use as a source sound				

SIZE AND INSTALLATION

Model	N.W.	G.W.	Unit Size	Carton Size	Mounting
Duct diameters					
Air volume range					
Motor power					
Noise level					

Cabinet Centrifugal Fan Source Parameters

Ventilation Fan / Cabinet Centrifugal Fan Series



PERFORMANCE

Model	Remote	Voltage	Power	Air Volume	Air Velocity	Noise
Air volume range	2000-25000 m ³ /h by model	Use as a source airflow				
Static pressure range	400-740 Pa	Use as source pressure				
Motor power	780-7856 W by model	Confirm voltage, phase,				
Power supply options	220 V / 50 Hz or 380 V / 50 Hz	Confirm US electrical				

SIZE AND INSTALLATION

Model	N.W.	G.W.	Unit Size	Carton Size	Mounting
Air volume range					
Static pressure range					
Motor power					
Power supply options					

Exhaust Fans

Exhaust fans for bathroom ventilation, commercial bathroom ventilation fans, utility rooms, support spaces, ceiling exhaust ventilators, wall or sidewall exhaust fan projects, duct route checks, bathroom fan noise, and current model document requests.

SERIES AND MODEL PARAMETERS

Use these rows to select the right product page before requesting model documents.



Ceiling Mounted Exhaust Fan Series

Ceiling Mounted Exhaust Fan

Ceiling mounted exhaust fan for bathroom duct and sound review, plastic or integrated ceiling exhaust requests, kitchen-adjacent support rooms, and small-room exhaust projects where a 300 x 300 mm reference panel and ceiling layout need review while hood-governed kitchen exhaust stays separate.

Model: Ceiling Exhaust Series

Airflow: Integrated air volume 180-250 m3/h; plastic source air volume 120-480 m3/h by model

Static: Integrated pressure 98-150 Pa by model; confirm duct path before submittal use

Voltage: Confirm the US voltage option

Power: Integrated motor power 30 W; plastic source motor power 24-51 W by model

Sound: Integrated noise 41-42 dB(A); plastic source noise 41-47 dB(A); installed sound depends on duct and mounting conditions

Dimensions: 300 x 300 mm reference size; confirm inch dimensions and current size

Weight: Confirm shipping and installed weight

Mounting: Ceiling mounted / integrated mounted



Wall Mounted Exhaust Fan Series

Wall Mounted Exhaust Fan

Wall mounted exhaust fan for utility rooms, bathrooms, side wall exhaust fan projects, and support-room exhaust where grille choice, automatic shutter behavior, wiring, duct path, and ABS housing need review.

Model: Wall Exhaust Series

Airflow: air volume 280 / 520 / 750 / 1090 m3/h by model class; confirm exact model before submittal use

Voltage: Confirm the US voltage option

Power: 25 / 30 / 40 / 50 W by model class; confirm voltage and exact model power

Sound: 36 / 40 / 43 / 45 dB by model class; installed sound depends on wall and duct conditions

Dimensions: 6/8/10/12 inch options available; confirm exact dimensions

Weight: Confirm shipping and installed weight

Mounting: Wall mounted

Controls: Confirm auto-shutter mechanism and wiring

Ceiling Exhaust Fan Source Parameters

Exhaust Fans / Ceiling Mounted Exhaust Fan Series



PERFORMANCE

Model	Remote	Voltage	Power	Air Volume	Air Velocity	Noise
Integrated installation hole	300 x 300 mm	Use for the integrated				
Integrated air volume	180-250 m ³ /h by model	Use as a source airflow				
Integrated motor power	30 W	Confirm voltage and exact				
Integrated noise level	41-42 dB(A)	Use as a source sound				
Plastic installation hole	95 / 148 mm	Use only for the plastic				
Plastic air volume	120-480 m ³ /h by model	Use as a source airflow				
Plastic motor power	24-51 W by model	Confirm voltage and exact				
Plastic noise level	41-47 dB(A)	Use as a source sound				

SIZE AND INSTALLATION

Model	N.W.	G.W.	Unit Size	Carton Size	Mounting
Integrated installation hole					
Integrated air volume					
Integrated motor power					
Integrated noise level					
Plastic installation hole					
Plastic air volume					
Plastic motor power					
Plastic noise level					

Wall Mounted Exhaust Fan Source Parameters

Exhaust Fans / Wall Mounted Exhaust Fan Series



PERFORMANCE

Model	Remote	Voltage	Power	Air Volume	Air Velocity	Noise
Air volume	280 / 520 / 750 / 1090 m3/h	Use as a source airflow				
Install hole size	198 x 198 / 248 x 248 / 298	Match the wall opening,				
Motor power	25 / 30 / 40 / 50 W by model	Confirm voltage and exact				
Noise level	36 / 40 / 43 / 45 dB by model	Use as a source sound				
Net weight	1.2-3.2 kg by model	Use for early handling				

SIZE AND INSTALLATION

Model	N.W.	G.W.	Unit Size	Carton Size	Mounting
Air volume					
Install hole size					
Motor power					
Noise level					
Net weight					

Dehumidifiers

Residential-adjacent and light commercial dehumidifier options for basements, storage, gyms, and moisture-sensitive spaces.

SERIES AND MODEL PARAMETERS

Use these rows to select the right product page before requesting model documents.



Commercial Dehumidifier Sizing Series

Commercial Dehumidifier

Commercial dehumidifier for warehouses, gyms, hotels, offices, shopping malls, and storage rooms where capacity, drainage, timing control, and service access need model review.

Model: Commercial Dehumidifier Series

Airflow: Confirm airflow and dehumidification capacity by current model documents

Voltage: Confirm the US voltage option

Power: Confirm electrical data by current model documents

Sound: Confirm sound data by current model documents

Dimensions: Confirm inch dimensions by model

Weight: Confirm shipping and installed weight

Mounting: Freestanding or project-specific placement; verify clearance

Controls: Confirm humidistat, 24-hour timing, drainage, and electrical options



Compact Dehumidifier Series

Compact Dehumidifier

Compact dehumidifier for basements, storage rooms, and smaller commercial spaces where continuous drainage, frost handling, fresh-air path, and fault self-checking need review.

Model: Compact Dehumidifier Series

Airflow: Confirm airflow and dehumidification capacity by current model documents

Voltage: Confirm the US voltage option

Power: Confirm electrical data by current model documents

Sound: Confirm sound data by current model documents

Dimensions: Confirm inch dimensions by model

Weight: Confirm shipping and installed weight

Mounting: Freestanding or project-specific placement; verify clearance

Controls: Confirm drainage, frost handling, fresh-air path, and fault self-checking functions

Commercial Dehumidifier Source Selection Fields

Dehumidifiers / Commercial Dehumidifier Sizing Series



PERFORMANCE

Model	Remote	Voltage	Power	Air Volume	Air Velocity	Noise
Placement	Movable commercial dehumidifier	Confirm room layout,				
Control and drainage	Humidistat, 24-hour timing,	Collect RH target,				
Application fit	Warehouses, gyms, hotels,	Match the equipment direction				
Document boundary	Capacity, electrical, sound, and	Do not use the page as a				

SIZE AND INSTALLATION

Model	N.W.	G.W.	Unit Size	Carton Size	Mounting
Placement					
Control and drainage					
Application fit					
Document boundary					

Compact Dehumidifier Source Selection Fields

Dehumidifiers / Compact Dehumidifier Series



PERFORMANCE

Model	Remote	Voltage	Power	Air Volume	Air Velocity	Noise
Placement	Compact freestanding dehumidifier	Confirm room size,				
Control and drainage	Continuous drainage, frost	Collect moisture source,				
Application fit	Basements, storage rooms, and	Use after moisture source				
Document boundary	Capacity, electrical, sound, and	Do not use the page as a				

SIZE AND INSTALLATION

Model	N.W.	G.W.	Unit Size	Carton Size	Mounting
Placement					
Control and drainage					
Application fit					
Document boundary					